



COMMUNITY SUMMIT



NORTH
AMERICA





ALM and the Power Platform

– a match [to be] made in Heaven

Jonas Rapp



Jonas Rapp



#LazyDeveloper

Dev 25+ years

CRM 10+ years

MVP 4th year

Tools all the years

 @rappen

 jonasr.app

ALM – focus today

ALM in the Power Platform

Solution Management

Tests and QA

Tools for Automation

Demo

Power Platform Maturity Model



ALM – the basics

Application Lifecycle Management

Process – not tools

Tools – secure the process

Repeatability

Reproducibility



ALM in the Power Platform

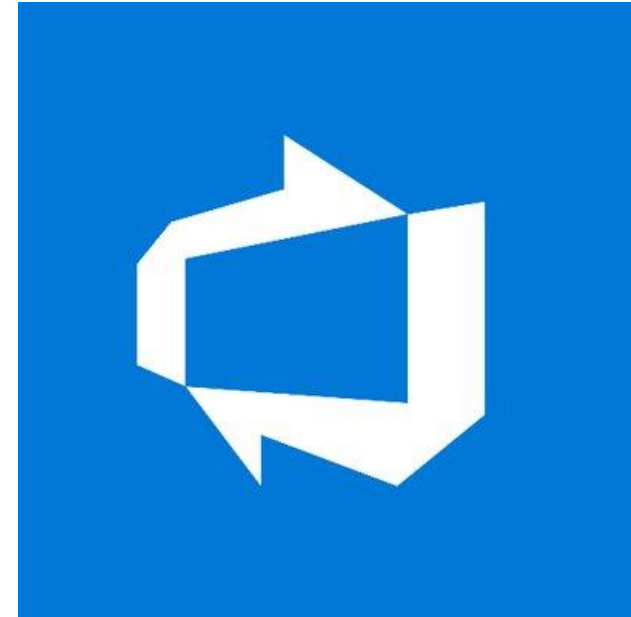
Azure DevOps

Power Platform Build Tools

Community Tools

Test Frameworks

Solutions are the vessels



Solutions are the vessels

CDS concept since 2011

Add ALL components to solutions

One unmanaged in each DEV

Only managed downstream

Dependency management

Update connections on import



Tests and Quality Assurance

Power Platform Checker

Canvas Test Studio

Easy Repro

Unit tests

Power Automate UI flows (RPA)



Tools for Automation

Azure DevOps Pipelines

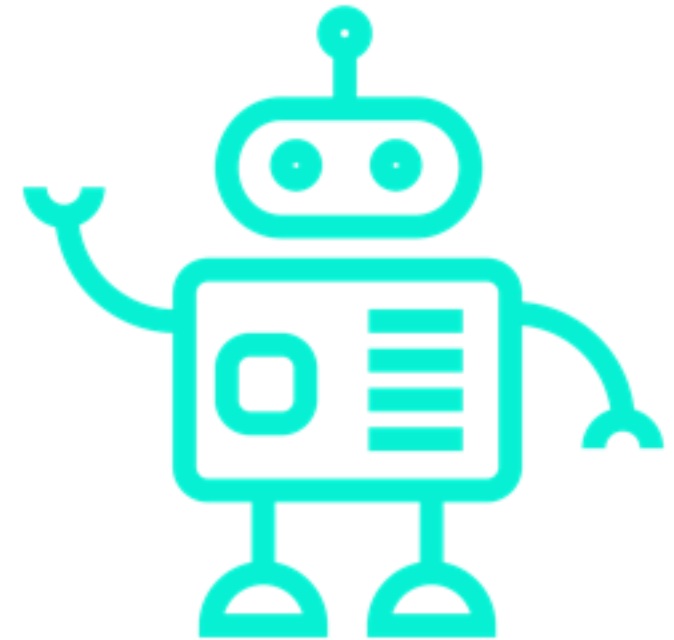
GitHub Actions

PowerShell scripts

Canvas App 🤖

jonasr.app/canvas-alm

Marc Schweigert





+ IMPORT SOLUTION

Center of



SOLUTION	PUSH STATUS		PULL REQUEST STATUS		TEST/PROD STATUS
Center of Excellence - Core Components Open Solution	PUSH CHANGES TO GIT		CREATE PULL REQUEST		
Center of Excellence - Governance Co... Open Solution	PUSH CHANGES TO GIT		CREATE PULL REQUEST		
Center of Excellence - Nurture Compon... Open Solution	PUSH CHANGES TO GIT		CREATE PULL REQUEST		
Center of Excellence - PVA Open Solution	PUSH CHANGES TO GIT		CREATE PULL REQUEST		
Center of Excellence - Innovation Backl... Open Solution	PUSH CHANGES TO GIT		CREATE PULL REQUEST		
Center of Excellence - License Requests Open Solution	PUSH CHANGES TO GIT		CREATE PULL REQUEST		
Center of Excellence - Developer Resou... Open Solution	PUSH CHANGES TO GIT		CREATE PULL REQUEST		
Center of Excellence - Audit Logs Open Solution	PUSH CHANGES TO GIT		CREATE PULL REQUEST		
Center of Excellence - License Requets Open Solution	PUSH CHANGES TO GIT		CREATE PULL REQUEST		



+ IMPORT SOLUTION

SOLUTION		PUSH STATUS		PULL REQUEST STATUS	
Center of Excellence - Core Components Open Solution	PUSH CHANGES TO GIT		CREATE PULL REQUEST		
Center of Excellence - Governance Co... Open Solution	PUSH CHANGES TO GIT		CREATE PULL REQUEST		
Center of Excellence - Nurture Compon... Open Solution	PUSH CHANGES TO GIT		CREATE PULL REQUEST		
Center of Excellence - PVA Open Solution	PUSH CHANGES TO GIT		CREATE PULL REQUEST		
Center of Excellence - Innovation Backl... Open Solution	PUSH CHANGES TO GIT		CREATE PULL REQUEST		
Center of Excellence - License Requests Open Solution	PUSH CHANGES TO GIT		CREATE PULL REQUEST		
Center of Excellence - Developer Resou... Open Solution	PUSH CHANGES TO GIT		CREATE PULL REQUEST		
Center of Excellence - Audit Logs Open Solution	PUSH CHANGES TO GIT		CREATE PULL REQUEST		
Center of Excellence - License Request... Open Solution	PUSH CHANGES TO GIT		CREATE PULL REQUEST		

Branch

CenterofExcellenceCoreComponents-1.71



Enter new branch name to create branch

Commit Message

Enter a commit message

COMMIT



+ IMPORT SOLUTION

SOLUTION	PUSH STATUS		PULL REQUEST STATUS	
Center of Excellence - Core Components Open Solution	PUSH CHANGES TO GIT		CREATE PULL REQUEST	
Center of Excellence - Governance Co... Open Solution	PUSH CHANGES TO GIT		CREATE PULL REQUEST	
Center of Excellence - Nurture Compon... Open Solution	PUSH CHANGES TO GIT		CREATE PULL REQUEST	
Center of Excellence - PVA Open Solution	PUSH CHANGES TO GIT		CREATE PULL REQUEST	
Center of Excellence - Innovation Backl... Open Solution	PUSH CHANGES TO GIT		CREATE PULL REQUEST	
Center of Excellence - License Requests Open Solution	PUSH CHANGES TO GIT		CREATE PULL REQUEST	
Center of Excellence - Developer Resou... Open Solution	PUSH CHANGES TO GIT		CREATE PULL REQUEST	
Center of Excellence - Audit Logs Open Solution	PUSH CHANGES TO GIT		CREATE PULL REQUEST	
Center of Excellence - License Requets Open Solution	PUSH CHANGES TO GIT		CREATE PULL REQUEST	

Source Branch

marcsc-534



Target Branch



CenterofExcellenceCoreComponents-1.71



Title

Enter a Pull Request title

Description

Enter a Pull Request description

CREATE



+ IMPORT SOLUTION

SOLUTION	PUSH STATUS		PULL REQUEST STATUS	
Center of Excellence - Core Components Open Solution	PUSH CHANGES TO GIT		CREATE PULL REQUEST	
Center of Excellence - Governance Co... Open Solution	PUSH CHANGES TO GIT		CREATE PULL REQUEST	
Center of Excellence - Nurture Compon... Open Solution	PUSH CHANGES TO GIT		CREATE PULL REQUEST	
Center of Excellence - PVA Open Solution	PUSH CHANGES TO GIT		CREATE PULL REQUEST	
Center of Excellence - Innovation Backl... Open Solution	PUSH CHANGES TO GIT		CREATE PULL REQUEST	
Center of Excellence - License Requests Open Solution	PUSH CHANGES TO GIT		CREATE PULL REQUEST	
Center of Excellence - Developer Resou... Open Solution	PUSH CHANGES TO GIT		CREATE PULL REQUEST	
Center of Excellence - Audit Logs Open Solution	PUSH CHANGES TO GIT		CREATE PULL REQUEST	
Center of Excellence - License Requets Open Solution	PUSH CHANGES TO GIT		CREATE PULL REQUEST	

Azure DevOps Organization

pplatform

Azure DevOps Project

CoE

Azure DevOps Repository

CoE

Azure DevOps Service Connection

https://contosocoe.crm.dynamics.com/

SAVE

Automation areas

Quality checks

Environments

Solutions

Configuration

Environment Variables



DEMO!

Create Solution

Add Components

Export / Import

Create AzDO Build pipeline

Run Build

Create AzDO Release pipeline

Deploy Release



DEMO!

Create Solution

Add Components

Export / Import

Create AzDO Build pipeline

Run Build

Create AzDO Release pipeline

Deploy Release



Power Platform Maturity Model

- 'Where are we?'
- Based on TOGAF Maturity Model

Business Transformation Readiness Assessment - Maturity Model																																													
Factor 2: Need for Enterprise Information Architecture		Class		Organizational Context																																									
Definition		There is recognition by the organization that information is a strategic corporate asset requiring stewardship. There is also recognition that the data is not universally understandable, of requisite quality, and accessible.																																											
Maturity Model Levels																																													
0 Not defined	1 Ad Hoc	2 Repeatable	3 Defined	4 Managed	5 Optimized																																								
Information is not recognized as an asset. There is no clear stewardship of data.	Data Management (DM) concepts are intuitively understood and practiced on an <i>ad hoc</i> basis. Stewardship is informal. Data is recognized as being of some importance to the organization. Focus is primarily on technical management of redundant data applications.	Many parts of the organization value information/data.	Data is recognized as a strategic asset in most parts of the organization.	Data is recognized as a strategic asset in most parts of the organization.	Data is treated in all levels throughout the organization as a strategic asset to be exploited and re-used. Data products and services are strongly integrated with the management practice of the organization. All staff are empowered and equipped to take stewardship of information, and are seen as "knowledge workers".																																								
<table><thead><tr><th colspan="2">Level 0 Not Defined</th><th>Level 1 Ad Hoc</th><th>Level 2 Defined</th><th>Level 3 Optimised</th></tr></thead><tbody><tr><td>Deployment</td><td>Manual</td><td>Scripted using PowerShell Triggered Manually</td><td>Scripted using Azure DevOps Dynamics packages</td><td>Custom built deployment solution</td></tr><tr><td>Version Control</td><td>No versioning</td><td>Manual before release</td><td>Automatically updated on release</td><td>Automated universal version numbering across components</td></tr><tr><td>Solution Layering</td><td>Individual solution</td><td>Unmanaged</td><td>Layered managed</td><td>Layered managed with patching</td></tr><tr><td>Quality Control</td><td>Not defined</td><td>Peer reviews following development standards or using local code analysis</td><td>Integrated static code analysis and automated solution checker</td><td>Custom defined analysis rules</td></tr><tr><td>Testing</td><td>Manual testing</td><td>Code unit testing</td><td>Automated regression testing for risky components</td><td>High coverage of automated (70%) regression testing including unit and front-end testing</td></tr><tr><td>Source Control</td><td>No source control</td><td>Coarse Solution, JavaScript, Web Resources, Plugins stored in Source Control</td><td>Solution breakdown, branching strategy</td><td>Branching strategy drives implementation.</td></tr><tr><td>Environment Control</td><td>Manual backup restores</td><td>Scripted backup restores</td><td>Automated based on nightly builds</td><td>Built into the release pipeline</td></tr></tbody></table>						Level 0 Not Defined		Level 1 Ad Hoc	Level 2 Defined	Level 3 Optimised	Deployment	Manual	Scripted using PowerShell Triggered Manually	Scripted using Azure DevOps Dynamics packages	Custom built deployment solution	Version Control	No versioning	Manual before release	Automatically updated on release	Automated universal version numbering across components	Solution Layering	Individual solution	Unmanaged	Layered managed	Layered managed with patching	Quality Control	Not defined	Peer reviews following development standards or using local code analysis	Integrated static code analysis and automated solution checker	Custom defined analysis rules	Testing	Manual testing	Code unit testing	Automated regression testing for risky components	High coverage of automated (70%) regression testing including unit and front-end testing	Source Control	No source control	Coarse Solution, JavaScript, Web Resources, Plugins stored in Source Control	Solution breakdown, branching strategy	Branching strategy drives implementation.	Environment Control	Manual backup restores	Scripted backup restores	Automated based on nightly builds	Built into the release pipeline
Level 0 Not Defined		Level 1 Ad Hoc	Level 2 Defined	Level 3 Optimised																																									
Deployment	Manual	Scripted using PowerShell Triggered Manually	Scripted using Azure DevOps Dynamics packages	Custom built deployment solution																																									
Version Control	No versioning	Manual before release	Automatically updated on release	Automated universal version numbering across components																																									
Solution Layering	Individual solution	Unmanaged	Layered managed	Layered managed with patching																																									
Quality Control	Not defined	Peer reviews following development standards or using local code analysis	Integrated static code analysis and automated solution checker	Custom defined analysis rules																																									
Testing	Manual testing	Code unit testing	Automated regression testing for risky components	High coverage of automated (70%) regression testing including unit and front-end testing																																									
Source Control	No source control	Coarse Solution, JavaScript, Web Resources, Plugins stored in Source Control	Solution breakdown, branching strategy	Branching strategy drives implementation.																																									
Environment Control	Manual backup restores	Scripted backup restores	Automated based on nightly builds	Built into the release pipeline																																									
				Recommended Target State																																									

© The Open Group

Power Platform Maturity Model

	Level 0 Not Defined	Level 1 Ad Hoc	Level 2 Defined	Level 3 Optimised
Deployment	Click-Import-Browse...	Scripted using PowerShell Triggered Manually	Scripted using Azure DevOps Dynamics/CDS packages	Custom built deployment solution
Version Control	1.0.0.0	Manual before release	Automatically updated on release	Automated universal version numbering across components
Solution Layering	Default solution	Unmanaged	Layered managed	Layered managed with patching
Quality Control	Works on my machine	Peer reviews following development standards or using local code analysis	Integrated static code analysis and automated solution checker	Custom defined analysis rules
Testing	Manual testing	Code unit testing	Automated regression testing for risky components	High coverage (70%) of automated regression testing including unit and front-end testing
Source Control	USB stick	Coarse Solution, JavaScript, Web Resources, Plugins stored in Source Control	Solution breakdown, branching strategy	Branching strategy drives implementation.
Environment Control	Manual backup Hopefully restores	Scripted backup restores	Automated based on nightly builds	Built into the release pipeline



Thank You!

Evaluations 🙏

jonas@jonasr.app



